



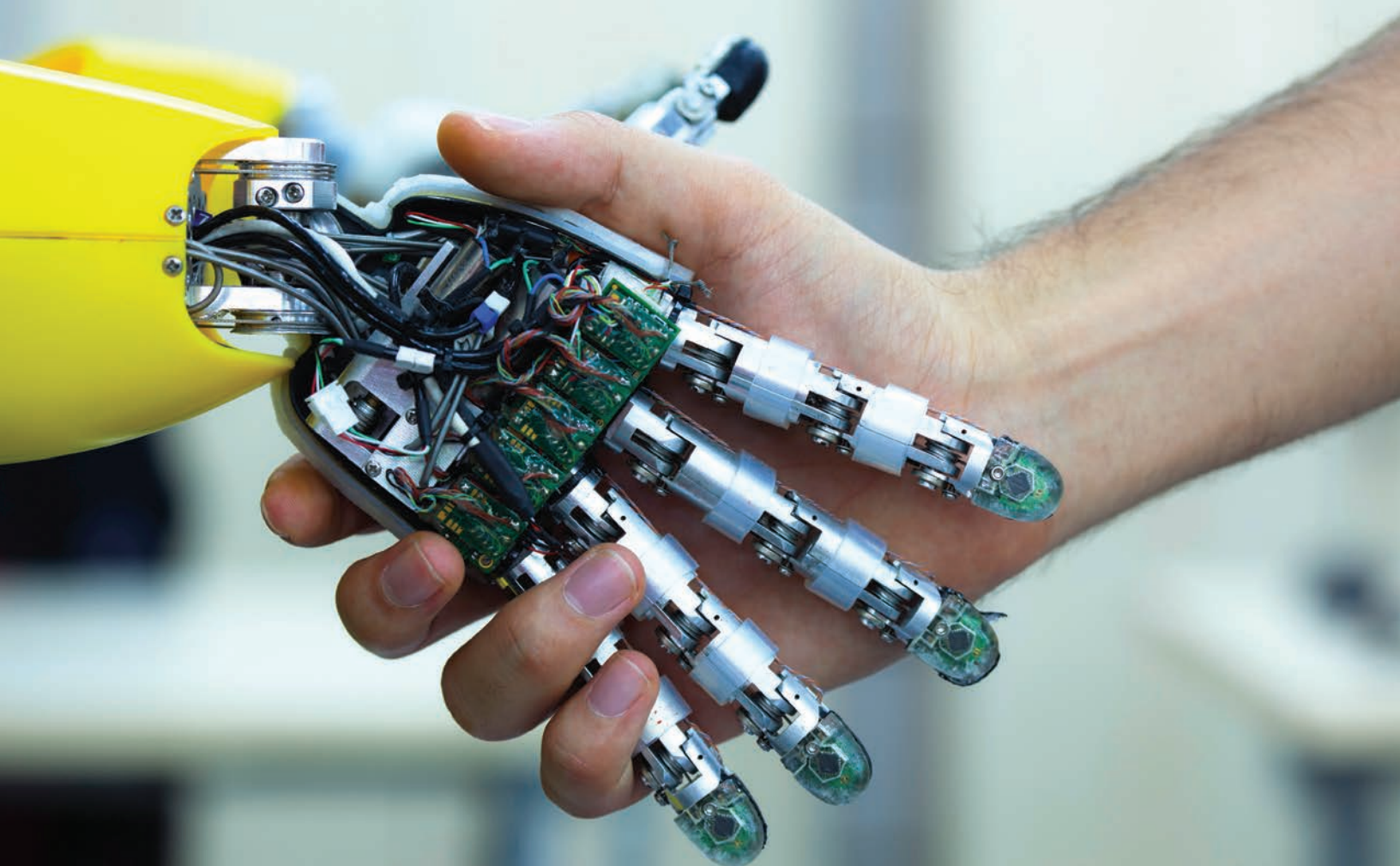
www.galcanada.com



It's time to partner
with the best in Door
Operator technology

MOVFE 2500-HL

**A Non-Proprietary
Linear Door Operator**
designed to be highly
**adaptable, quiet,
reliable,** and provide
superior performance



Why A Linear Door Operator Is An Intelligent Choice.

There's a good reason why those in the elevator industry are turning to Linear Door Openers for modernization jobs. By offering fewer mechanical components Linear systems are easier to install, maintain, and are lighter and quieter than Harmonic designs. Linear Door Operators can also be mounted more easily into low overhead applications. And since car door panels are attached at the top, Linear designs are an excellent design choice when glass door panels are being used.

Proven. Reliable. Popular.

MOVFE-2500 HL utilizes an encoder feedback closed-loop drive, plug-and-play detector capability, provides fail-safe operation in case of encoder failure, and offers serial communication to **GAL's Galaxy Controller**. **MOVFE-2500 HL** is of non-proprietary design, making it suitable for practically any site.

Above all, **MOVFE-2500 HL** uses high quality bearings and is constructed from solid heavy-gauge steel—which is why it has acquired its reputation for solid performance throughout the industry.

The Future Is Calling. MOVFE 2500-HL Is Ready.

In order for today's elevators to achieve peak performance, reliability, and maintain passenger safety, the Door Operator must be of superior design. After years of use in the field, **MOVFE-2500 HL** has proven itself as the durable, cost-effective, logical choice in Linear Door Operators.

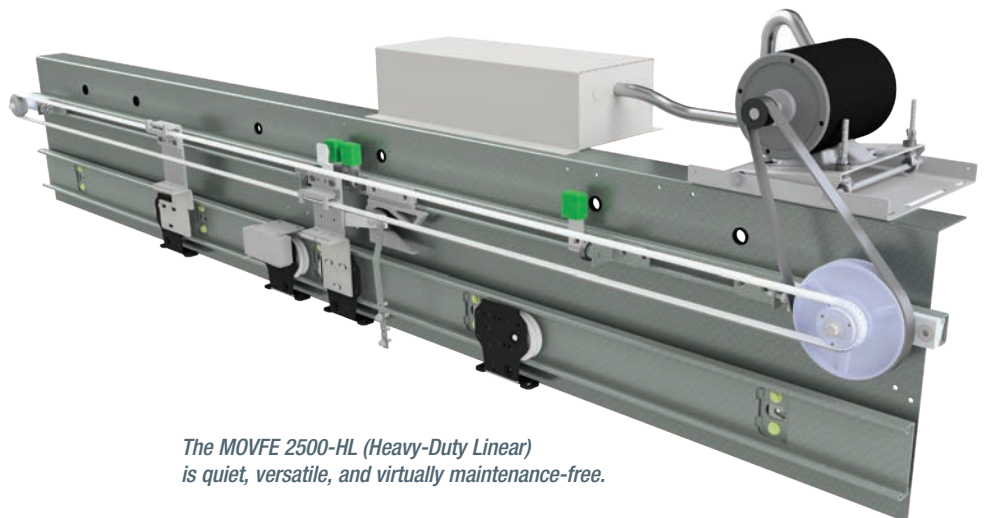
MOVFE 2500-HL: Features

- **Double Feedback Closed-loop System** constantly monitors distance and velocity, permitting MOVFE-2500 HL to 'learn' door width and optimize control of elevator doors.
- **CSA Certified. B44.1/ASME-A17.5**
- **Complies with CE and IEEE Safety Standards:** EN61000-4-2-6, EN61000-4-8, IEEE STD C62-45-1992 (EMC Conformity Report available).
- **230 VAC, 115 VAC** power supplies available.
- **1/2 HP AC motor** (accommodates most door loads, friction and wind pressures).
- **Heavy and Light Duty Linear models available.**
- **Non-contact Optical and Hall Effect sensors.**

- **LEDs on main board** indicate critical function status.
- **Universal inputs** accept control signals in form of dry contacts or signal voltages from 24V to 230 V, AC or DC.
- **Output Contacts rates at 10A, 230VAC.**
- **Pluggable input modules, output relays, and connectors.**
- **Toggle switches provided for manual operation, diagnostics, and operational verification, regardless of condition of control wiring to elevator controller.**
- **Keypad programmer with LCD display** to adjust, monitor, copy, and upload parameter sets and learn door width distance.
- **Over-torque and over-speed detection and restriction limits are defined** for easy adjustment and code compliance.
- **NPN and PNP edges connected directly to Door Operator (plug-and-play).**
- **CAN (Controlled Area Network)** and other protocols can be used for serial communication.
- **MOVFE 2500-HL operates in slow scan mode in case of DOL and DCL sensor (or encoder) failure until repairs completed.**
- **Auto fallback to slow mode if sensors or encoder fail.**
- **Serial communication option.**
- **Universal inputs and outputs.**
- **Over-torque and Over-Speed detections.**
- **Nudging, Narrow and Heavy Door Options available.**
- **Keypad standard with VFE.**

MOVFE 2500-HL: PMAC: Benefits

- **Double feedback, Closed-loop system utilizes Encoder and VVF drive.**
- **Plug-and-Play infrared detector edges (NPR and PNP).**



The MOVFE 2500-HL (Heavy-Duty Linear) is quiet, versatile, and virtually maintenance-free.