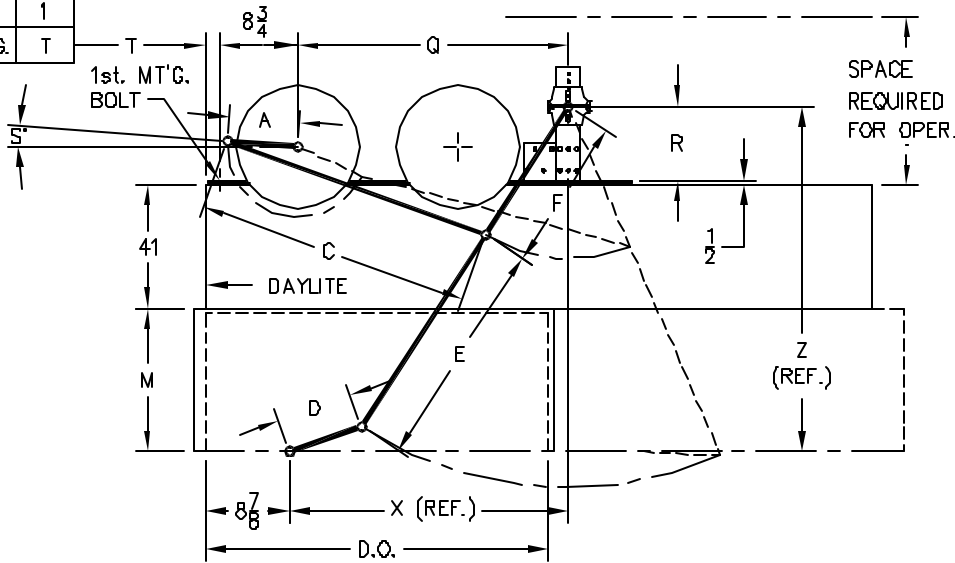


45-48	6
30-44	1
DOOR OPNG.	T



MOVFR	15
MOCT	
MDD	
MOM-MOH	19
MOMCT	
MOHCT	

48	6 $\frac{5}{8}$	34 $\frac{7}{8}$	12	56	21	23	39 $\frac{5}{8}$	75 $\frac{3}{4}$	33 $\frac{1}{2}$	11 $\frac{1}{4}$	5'
47	6 $\frac{1}{2}$	34 $\frac{3}{4}$	12	56	21	23	39 $\frac{5}{8}$	75 $\frac{3}{4}$	33 $\frac{1}{2}$	11 $\frac{1}{4}$	5'
46	6 $\frac{3}{8}$	34 $\frac{5}{8}$	12	56	21	23	39 $\frac{5}{8}$	75 $\frac{3}{4}$	33 $\frac{1}{2}$	11 $\frac{1}{4}$	5'
45	6 $\frac{1}{4}$	34 $\frac{1}{2}$	12	56	21	23	39 $\frac{5}{8}$	75 $\frac{3}{4}$	33 $\frac{1}{2}$	11 $\frac{1}{4}$	5'
44	6 $\frac{3}{4}$	37 $\frac{1}{8}$	10	47	22	19	34 $\frac{5}{8}$	67 $\frac{5}{8}$	33 $\frac{1}{2}$	7 $\frac{1}{8}$	12'
43	6 $\frac{5}{8}$	37	10	47	22	19	34 $\frac{5}{8}$	67 $\frac{5}{8}$	33 $\frac{1}{2}$	7 $\frac{1}{8}$	12'
42	6 $\frac{1}{2}$	36 $\frac{7}{8}$	10	47	22	19	34 $\frac{5}{8}$	67 $\frac{5}{8}$	33 $\frac{1}{2}$	7 $\frac{1}{8}$	12'
41	6 $\frac{3}{8}$	36 $\frac{3}{4}$	10	47	22	19	34 $\frac{5}{8}$	67 $\frac{5}{8}$	33 $\frac{1}{2}$	7 $\frac{1}{8}$	12'
40	6 $\frac{1}{4}$	36 $\frac{5}{8}$	10	47	22	19	34 $\frac{5}{8}$	67 $\frac{5}{8}$	33 $\frac{1}{2}$	7 $\frac{1}{8}$	12'
39	5 $\frac{1}{4}$	30 $\frac{3}{4}$	8	47	18	15	29 $\frac{1}{4}$	64	28 $\frac{3}{8}$	7 $\frac{1}{2}$	10'
38	5 $\frac{1}{8}$	30 $\frac{3}{4}$	8	47	18	15	29 $\frac{1}{4}$	64	28 $\frac{3}{8}$	7 $\frac{1}{2}$	10'
37	5	30 $\frac{5}{8}$	8	47	18	15	29 $\frac{1}{4}$	64	28 $\frac{3}{8}$	7 $\frac{1}{2}$	10'
36	5	30 $\frac{1}{2}$	8	47	18	15	29 $\frac{1}{4}$	64	28 $\frac{3}{8}$	7 $\frac{1}{2}$	10'
35	4 $\frac{7}{8}$	30 $\frac{3}{8}$	8	47	18	15	29 $\frac{1}{4}$	64	28 $\frac{3}{8}$	7 $\frac{1}{2}$	10'
34	4 $\frac{3}{4}$	26 $\frac{3}{4}$	6	48	19	15	25 $\frac{1}{4}$	66 $\frac{1}{8}$	24 $\frac{3}{8}$	9 $\frac{5}{8}$	10'
33	4 $\frac{5}{8}$	26 $\frac{5}{8}$	6	48	19	15	25 $\frac{1}{4}$	66 $\frac{1}{8}$	24 $\frac{3}{8}$	9 $\frac{5}{8}$	10'
32	4 $\frac{1}{2}$	26 $\frac{1}{2}$	6	48	19	15	25 $\frac{1}{4}$	66 $\frac{1}{8}$	24 $\frac{3}{8}$	9 $\frac{5}{8}$	10'
31	4 $\frac{3}{8}$	25 $\frac{5}{8}$	6	48	19	15	24 $\frac{3}{8}$	66 $\frac{3}{8}$	23 $\frac{1}{2}$	9 $\frac{7}{8}$	10'
30	4 $\frac{1}{8}$	25 $\frac{1}{2}$	6	48	19	15	24 $\frac{3}{8}$	66 $\frac{3}{8}$	23 $\frac{1}{2}$	9 $\frac{7}{8}$	10'
INCHES	A	C	D	E	F	M	X	Z	Q	R	S
DOOR OPENING	OPERATOR ARMS		DOOR ARMS			CLUTCH	PIVOT		OPERATOR		



SINGLE SPEED & TWO SPEED OPERATOR DATA TABLE  
30-48 D.O. FOR HIGH CABS 41" HEADER

FEB. 23 1987

S6898-41