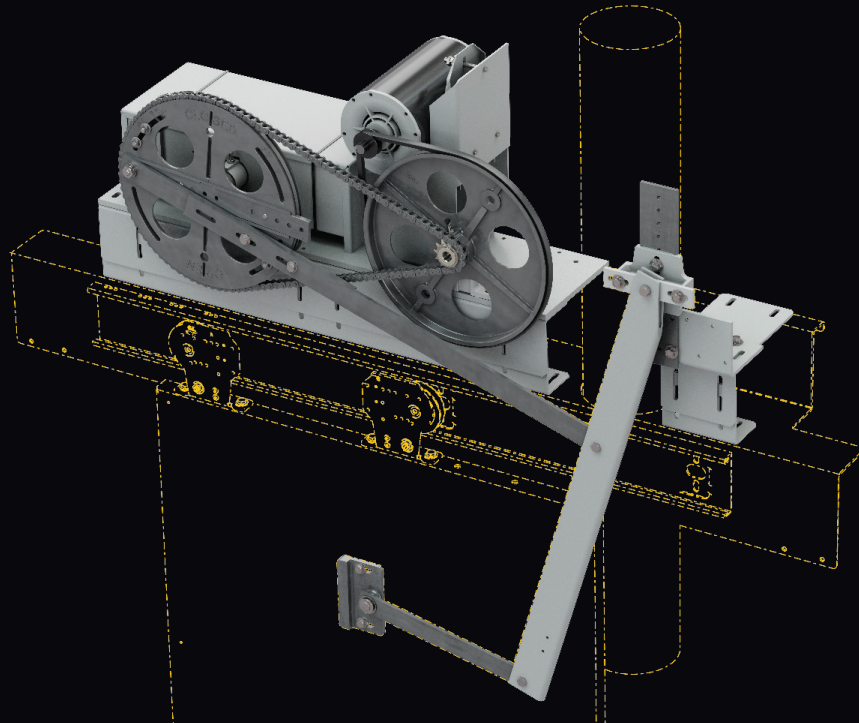


# Compact MOVFR-II for Dover IVO Jack



## PRE-ENGINEERED COMPACT GAL OPERATOR for limited cartop space in Dover IVO Jack cabs

Dover IVO Jacks have a hydraulic piston through the cartop that make it difficult to install most harmonic operators. GAL's done the hard work for you! Introducing our compact MOVFR-II.

Based on the same operator platform that GAL has sold for years, the compact MOVFR-II is designed to avoid the hydraulic piston. We've included front mounting supports, a universal drive arm, and drive bracket. Keep your existing clutch, and drive your doors with a single part number.

### BENEFITS

- Includes everything needed to convert the mechanics of the operator and drive the door
- CSA/UL certified where applicable
- Used on Dover IVO Jack cabs
- No surveys needed, just tell us the voltage and hand
- Retain all other Door Equipment including clutch and interlocks

### STANDARD FEATURES

- Available for single speed and two speed
- Operators available for 115 VAC and 230 VAC installations
- Dimensions range
  - Door Opening: 30"-48"
  - Up to 34" tall Header
- GAL Operator uses Discrete Communication to the Controller



## MODERNIZATION KITS

115 VAC Operators:

**KIT05-4001L** - IVO JACK TO MOVFR2 SS/2S, 115V - Left Hand

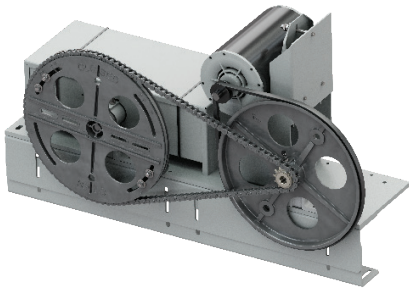
**KIT05-4001R** - IVO JACK TO MOVFR2 SS/2S, 115V - Right Hand

230 VAC Operators:

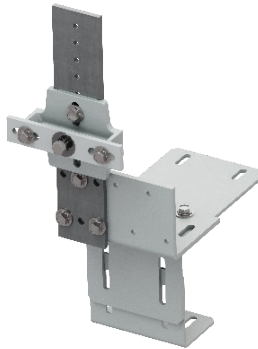
**KIT05-4002L** - IVO JACK TO MOVFR2 SS/2S, 230V - Left Hand

**KIT05-4002R** - IVO JACK TO MOVFR2 SS/2S, 230V - Right Hand

## CONTENTS OF EACH KIT



**COMPACT MOVFR-II  
W/ FRONT SUPPORT  
(230 VAC OR 115 VAC)**



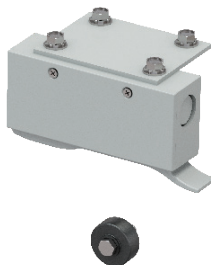
**PIVOT TOWER W/  
FRONT SUPPORT**



**DRIVE ARM  
ASSEMBLY**



**PARAMETER  
UNIT**



**GATE SWITCH  
AND ROLLER**



**INSTALLATION  
MANUAL**



**OPERATOR DISCRETE  
WIRING REQUIRED  
(Non-GAL Controllers)**

When using **GAL** Door operators with **NON-GAL Controllers**, please ensure that communication wiring from the Door operator with the controller is **DISCRETE**.

This kit will not communicate with a controller if **SERIAL** Communication is required (unless GAL or EC controller)

**Scan the QR code  
to checkout our  
other Mod Kits**



50 E. 153rd St.  
Bronx, NY 10451-2104  
Ph: 718.292.9000  
Fax: 718.292.2034

info@gal.com  
www.gal.com  
sales@vantageelevation.com  
www.vantageelevation.com



Chicago 877.300.5830  
New York 917.336.4597  
Miami 877.241.9354  
L.A. 877.300.5816  
Dallas 469.706.9316  
Toronto 888.425.2262